

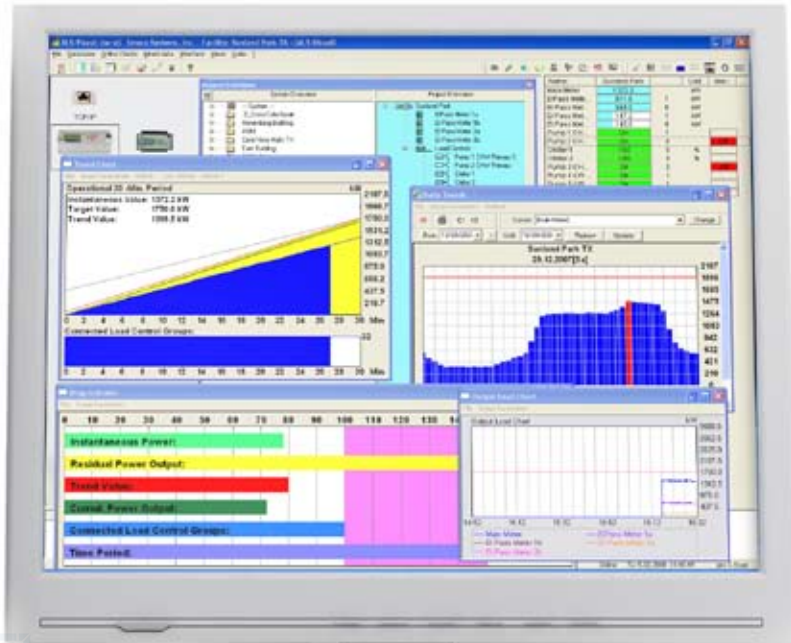
# Demand Control Systems



+ ++



## Network-Enabled, Database-Supported, Energy Management Software

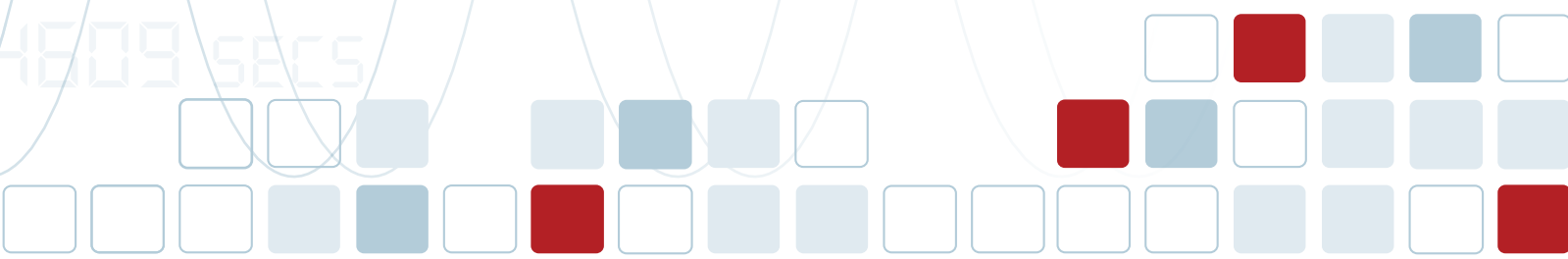


### Application / Functions

- Online configuration
- Graphical displays of load curves
- Real-time display of energy usage
- Record demand and consumption data
- Energy information database
- Network-enabled
- Export function for all interval data



+++++ + + ++



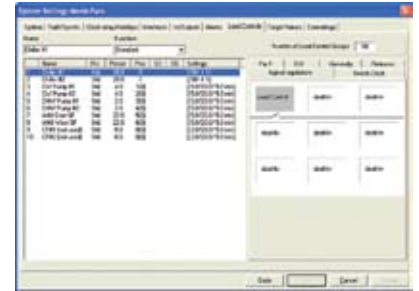


## INSTALLATION / CONFIGURATION

The Emacx energy management software ALC-visual can be easily installed on any Windows-based PC. The data transfer connection to the Emacx Automated Load Controller is established via Ethernet, modem or direct serial connection. ALC-visual is a user-friendly software application and with only a few basic configurations such as an IP address and port number, the system is ready to go online.



■ *Project Settings*



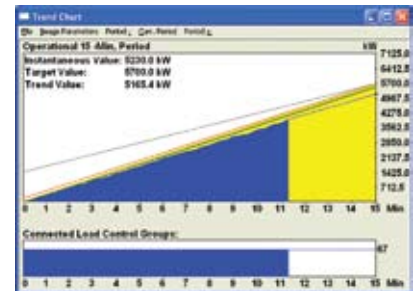
■ *Load Group Parameter Settings*

## ONLINE VISUALIZATION

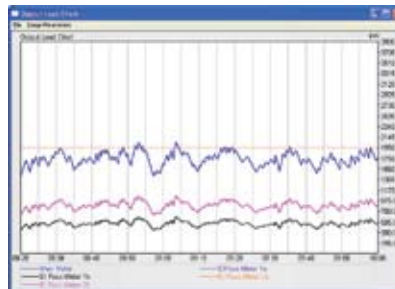
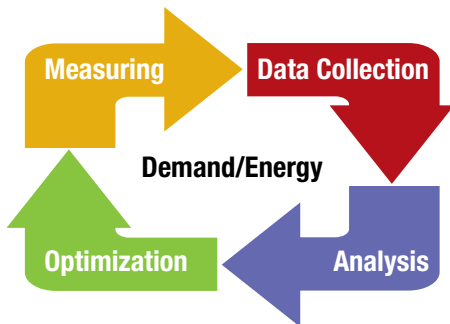
Measurements such as power, voltage, frequency, temperature and humidity or calculated values such as demand trending and average consumption can be displayed on-screen in real-time.



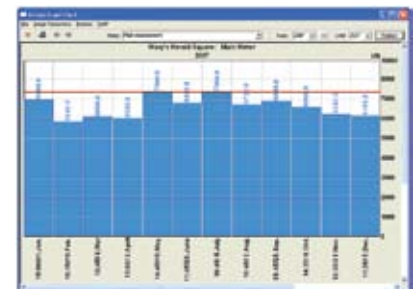
■ *Residual Output Chart*



■ *Trend Chart Utility Meter Interval*

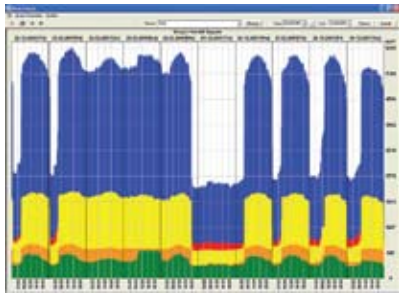


■ *Instantaneous Power Output Chart*

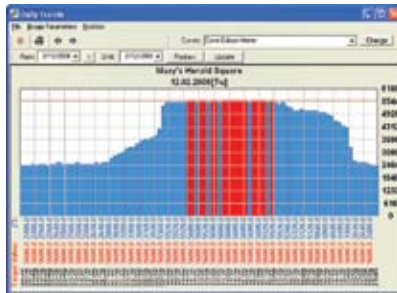


■ *Annual Load Chart*





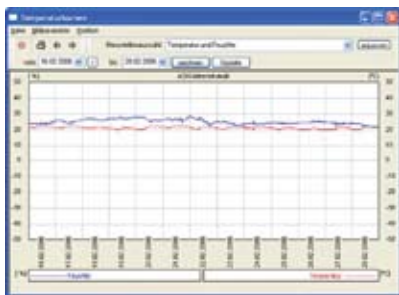
■ Meter Comparison Graph



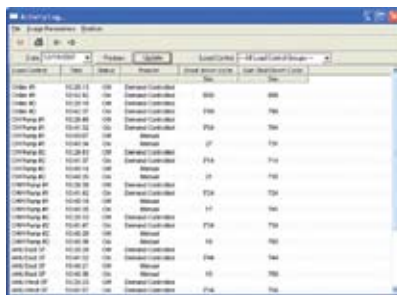
■ Daily Load Graph

## DATA ANALYSIS

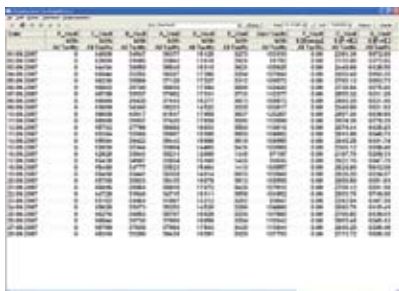
Day, month and year-specific values can be pulled directly from the memory of the load controller or the PC archive and displayed on-screen. Due to an mdb database, the user can display analysis as a function of time and date, lead performance indicators and comparison of individual meters.



■ Temperature Curves



■ Activity Log



■ kWh Consumption Values



■ Cost Analysis

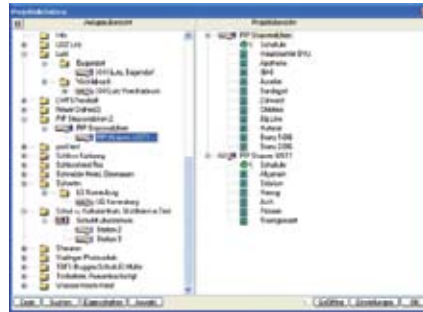
## BILLING, EXPORTING, AND MANAGING ENERGY DATA

ALC-visual has a cost analysis function that allows for cost allocation of individual utility meters. Data can be exported directly to an XLS format for spreadsheet analysis or exported into a XML format for use with other software packages.



## MANAGING FACILITIES

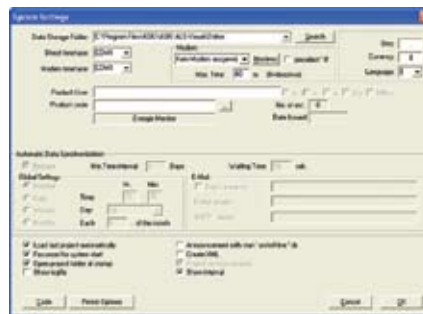
The automated demand control systems can be managed remotely over the internet / intranet. Multiple users can be logged on simultaneously.



■ *Facilities Management*

## ONLINE VISUALIZATION

All data, weather measurements, calculated values or threshold values can be programmed to trigger an alarm contact, send an e-mail or SMS notification.



■ *System Settings*

### SOFTWARE OPTIONS

- ALC-monitor: Online setup and display software
- ALC-visual: Software for peak load optimization + energy data acquisition

### SYSTEM REQUIREMENTS

- Processor: Intel Pentium 500 MHz or higher (or compatible processor)
- Operating system: Windows 98SE through XP, Vista
- System memory: 128MB RAM minimum
- Hard disk capacity: At least 100MB available
- Monitor resolution: 1024 x 768
- Ports: Ethernet or serial port